



# The Flying SHPE

The Society of Hispanic Professional Engineers at Lockheed Martin

May 30, 2013

Volume 3, Issue 6



## Important Contacts at [shpefortworth.org](http://shpefortworth.org)

**James Narey**  
SHPE President  
Desk: (817) 777-3591

**Thania Balcazar**  
VP - Professional Development  
Desk: (817) 763-7445

**Steve Hwang**  
VP - Community Outreach  
Desk: (817) 777-0482

**Juan Tezanos**  
Treasurer  
Desk: (817) 655-8943

**Marian Ouevedo**  
Secretary  
Desk: (817) 763-6027

**Karla Rovirosa**  
Director, Membership  
Desk: (817) 777-6217

**Arllyssa Jaquez**  
Director, SHPE Jr  
Desk: (817) 935-5516

**Juancarlos Mariano**  
Director, Community Outreach  
Desk: (817) 655-7072

**Oswaldo Ramirez**  
Director, Networking/Events  
Desk: (817) 763-7554

**Carlos Garcia**  
Historian  
Desk: (817) 763-7924

**Gerardo Ramos**  
Director, Communications  
Desk: (817) 763-2029

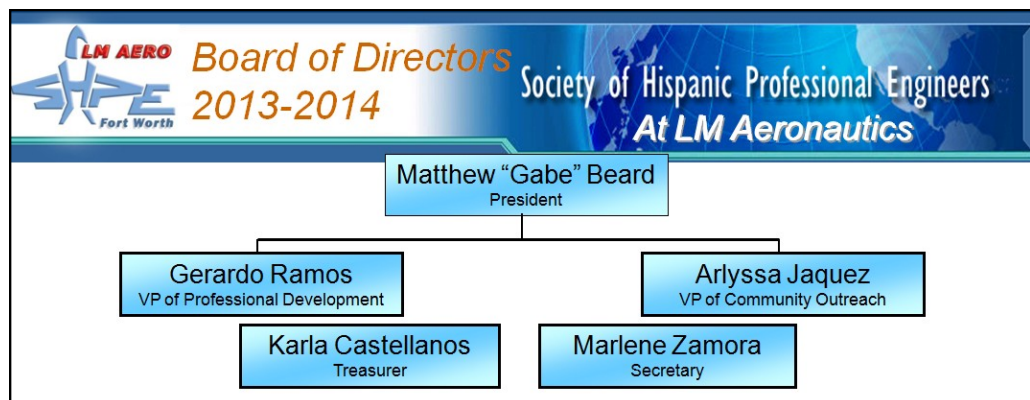
**Alexander Eksir**  
Executive Advisor  
Desk: (817) 777-7880

**Tom Bradley**  
Executive Advisor  
Desk: (817) 777-9494

## SHPE at LM Aero Election Results

Dear SHPE Familia,  
Thank you for voting in the SHPE at LM Aero 2013-2014 Elections. Your new Board of Directors are:

Gabe Beard - President  
Gerardo Ramos - VP of Professional Development  
Arllyssa Jaquez - VP of Community Outreach  
Norma Zamora - Secretary  
Karla Castellanos - Treasurer



Please welcome the new Board of Directors and a big THANK YOU to the SHPE at LM Aero 2012-2013 Board of Directors!!

## 2nd Annual SHPE at LM Aero Scholarship Golf Tournament

SHPE Familia,  
Come help us make the 2nd Annual SHPE LM Aero Charity Golf Tournament a success!!

When: June 7, 2013 (LM Off-Friday)  
Where: Squaw Creek Golf Course

We are looking for Corporate Sponsorships.

We also need volunteers to help with committees:

- Awards and Raffle Prizes
- Advertising and Sponsorship
- Food
- Volunteers (Day of the event)

All proceeds go towards the SHPE at LM Aero Scholarship Fund, a 501c3 tax exempt organization.

