

The Flying SHPE

The Society of Hispanic Professional Engineers at Lockheed Martin

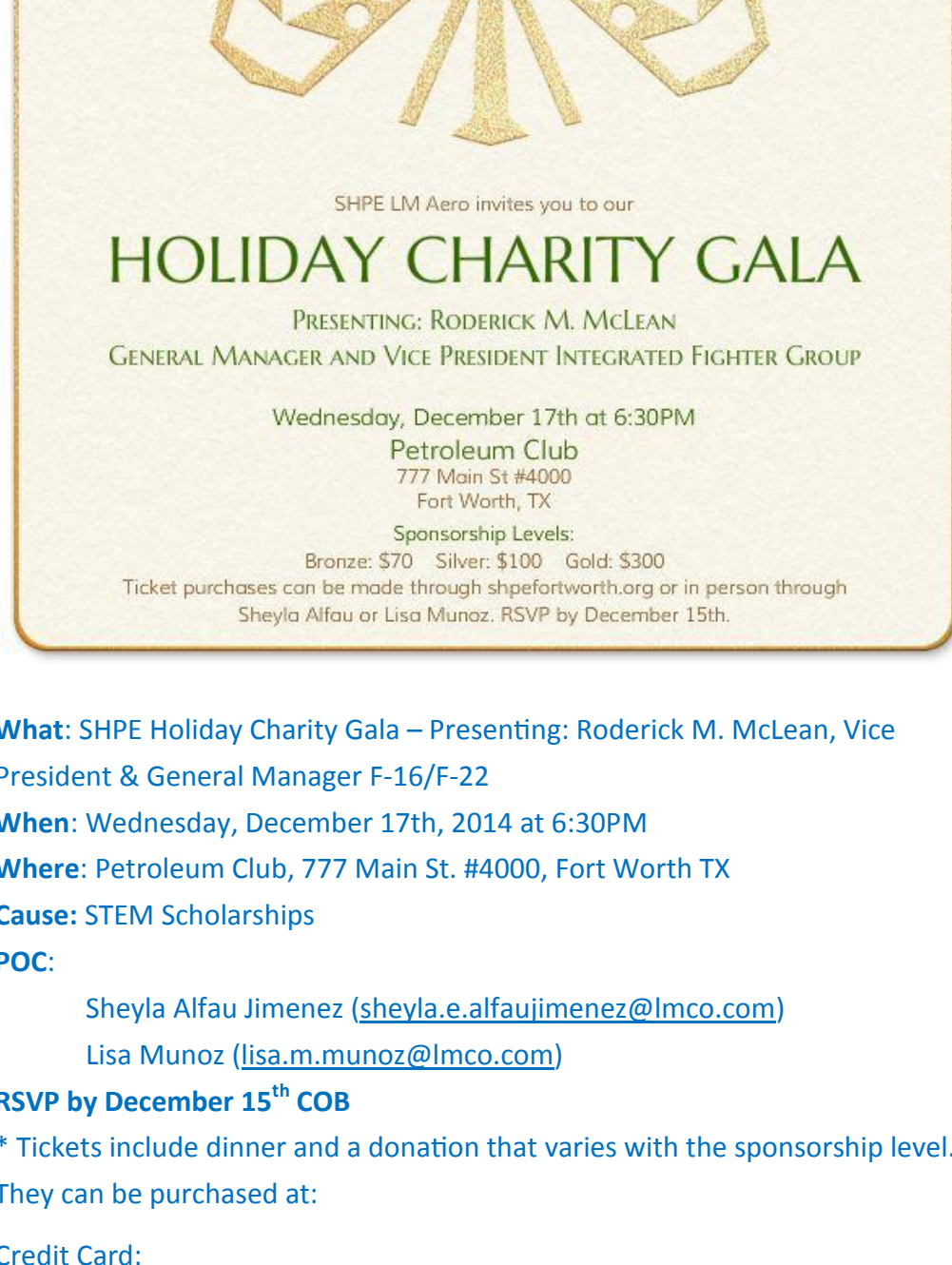
December 2014

Volume 5, Issue 6

SHPE Holiday Charity Gala

Each year we gather during the holiday season to celebrate as a SHPE Familia and to raise funds for one of our most important causes: STEM Outreach. This year all proceeds will go towards STEM scholarships for local high school students accepted into a STEM major. We need your help to achieve this goal! Join of us for an evening of networking, fundraising, and holiday fun! For more information on ticket pricing, speakers, and event details go to:

<http://shpe-lm-aeronautics.ticketleap.com/shpe-charity-gala/>



What: SHPE Holiday Charity Gala – Presenting: Roderick M. McLean, Vice President & General Manager F-16/F-22

When: Wednesday, December 17th, 2014 at 6:30PM

Where: Petroleum Club, 777 Main St. #4000, Fort Worth TX

Cause: STEM Scholarships

POC:

Sheyla Alfau Jimenez (sheyla.e.alfaujimenez@lmco.com)

Lisa Munoz (lisa.m.munoz@lmco.com)

RSVP by December 15th COB

* Tickets include dinner and a donation that varies with the sponsorship level.

They can be purchased at:

Credit Card:

<http://shpe-lm-aeronautics.ticketleap.com/shpe-charity-gala/>

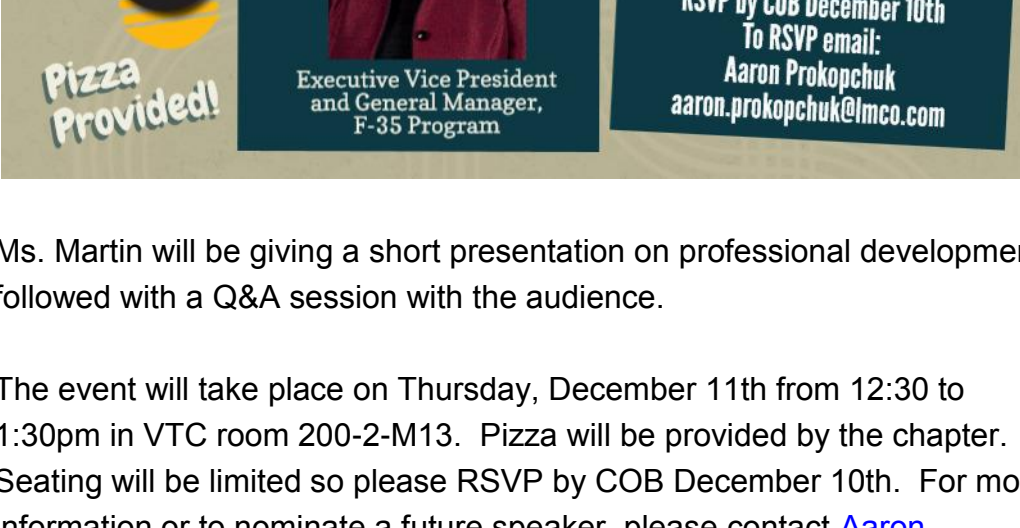
Event Key: SHPELMAERO

Cash or Check:

Contact [Sheyla Alfau Jimenez](#) or [Lisa Munoz](#)

SHPE Lunch N' Learn With Lorraine Martin

The chapter is excited to introduce the next speaker for our series of career/professional development Lunch N' Learn Executive Talks - The Executive Vice President and General Manager of the F-35 Joint Strike Fighter (JSF) Program, Ms. Lorraine Martin.



Ms. Martin will be giving a short presentation on professional development followed with a Q&A session with the audience.

The event will take place on Thursday, December 11th from 12:30 to 1:30pm in VTC room 200-2-M13. Pizza will be provided by the chapter. Seating will be limited so please RSVP by COB December 10th. For more information or to nominate a future speaker, please contact [Aaron Prokopchuk](#).

What: SHPE Lunch N' Learn with Lorraine Martin

When: December 11th, 12:30 PM - 1:30 PM

Where: Video Teleconference Room 200-2-M13

POC: Aaron Prokopchuk (aaron.prokopchuk@lmco.com)

Community Outreach: SHPE Jr.

We are seeking volunteers to assist with STEM activities at several local high schools. Sessions will be led by Lorena Loucel. Please contact Lorena Loucel to sign up!



What: SHPE Jr. Mentoring Sessions

When:

Trimble Tech: Friday, December 19th @ 3:45 PM

North Side HS: Tuesday, December 12th @ 3:45 PM

Trinity HS: Thursdays, December 4th and 18th @ 4:00 PM

Where:

Trimble Tech HS, 1003 W Cannon St, Fort Worth, TX 76104

North Side HS, 2211 McKinley Ave, Fort Worth, TX 76164

Trinity HS, 500 N Industrial Blvd, Euless, TX 76039

POC: Lorena Loucel (lorena.l.loucel@lmco.com)

Call for Volunteers – Young Women's Leadership Academy

The Young Women's Leadership Academy (YWLA) is currently recruiting mentors to pair with their Class of 2017 and are seeking your assistance. If you are or know a strong women leader in the Fort Worth Community that may have an interest in mentorship and impacting the life of a GEM, please share the "[Polish Mentor Application](#)" with them and encourage participation.

Mentor applications are due December 12th, the program kick-off will be hosted in January. Please contact Dean Martin at ehrica.martin@fwisd.org for more information and to submit the completed application form.

What: YWLA Mentoring

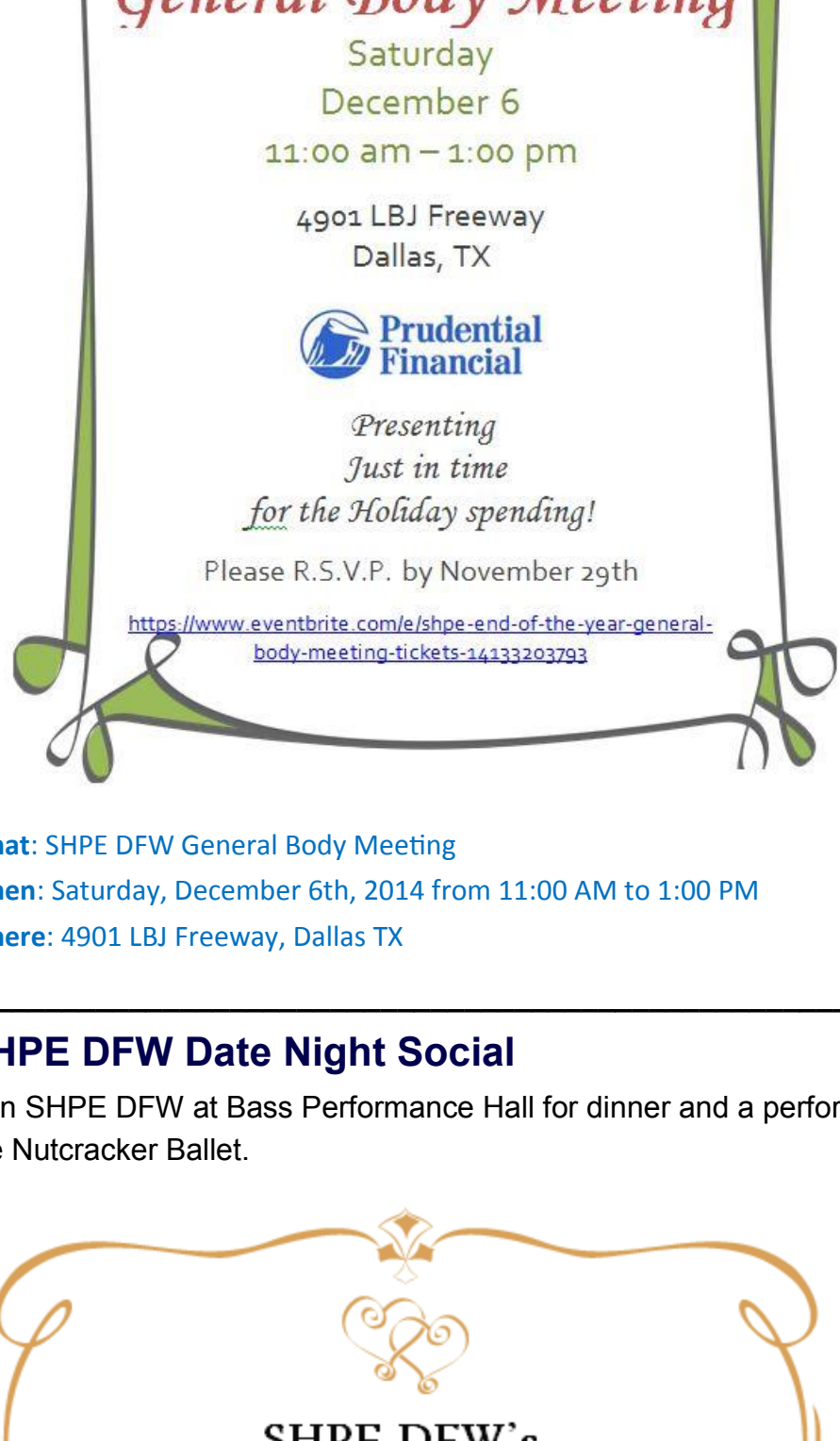
When: January 2015 (Kick-off)

Where: Fort Worth

POC: Ehrica Martin (ehrica.martin@fwisd.org)

SHPE DFW General Meeting

Join your SHPE Familia as we wrap up 2014 with an End of Year General Body meeting. We'll discuss what SHPE is, what we've done, and how YOU can benefit and become more involved with SHPE. Also, we'll have a guest speaker from Prudential who will be discussing Smart Money Skills - Investing and Saving, perfect for financial decisions during the holidays! Lunch will be provided from Jason's Deli. Please [RSVP](#) by November 29th.



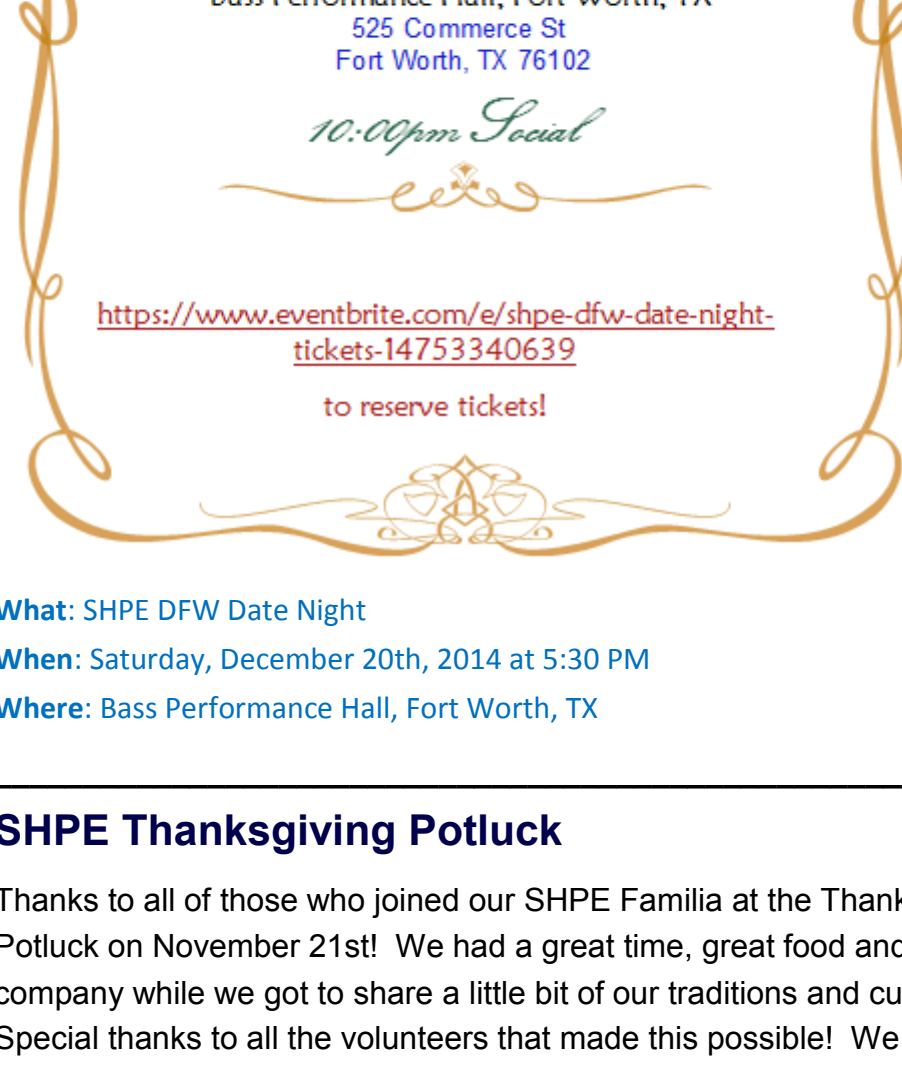
What: SHPE DFW General Body Meeting

When: Saturday, December 6th, 2014 from 11:00 AM to 1:00 PM

Where: 4901 LBJ Freeway, Dallas TX

SHPE DFW Date Night Social

Join SHPE DFW at Bass Performance Hall for dinner and a performance of the Nutcracker Ballet.



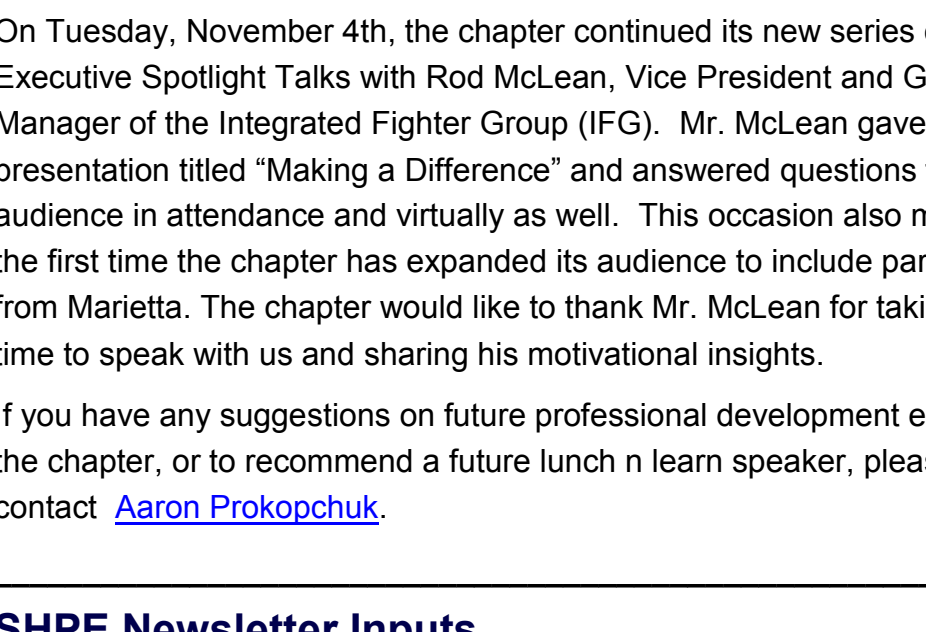
What: SHPE DFW Date Night

When: Saturday, December 20th, 2014 at 5:30 PM

Where: Bass Performance Hall, Fort Worth, TX

SHPE Thanksgiving Potluck

Thanks to all of those who joined our SHPE Familia at the Thanksgiving Potluck on November 21st! We had a great time, great food and great company while we got to share a little bit of our traditions and cultures. Special thanks to all the volunteers that made this possible! We hope to see you at future events!



SHPE Lunch N' Learn With Rod McLean

On Tuesday, November 4th, the chapter continued its new series of LM Executive Spotlight Talks with Rod McLean, Vice President and General Manager of the Integrated Fighter Group (IFG). Mr. McLean gave a presentation titled "Making a Difference" and answered questions from the audience in attendance and virtually as well. This occasion also marked the first time the chapter has expanded its audience to include participants from Marietta. The chapter would like to thank Mr. McLean for taking the time to speak with us and sharing his motivational insights.

If you have any suggestions on future professional development events for the chapter, or to recommend a future lunch n learn speaker, please contact [Aaron Prokopchuk](#).

SHPE Newsletter Inputs

If you have any input or events that you would like to see in our newsletter contact our director of communications [Hugo Martinez](#).

SHPE at LM Aero • www.shpefortworth.org

Like us on [Facebook!](#), post photos to #shpelmaerofw

SHPE Board of Directors

M. Gabe Beard (President) • Aaron Prokopchuk (VP, Professional Development)

Patricia Chu (VP, Community Outreach) • Lisa Munoz (Director of Membership)

Hugo Martinez (Director of Communications) • Juan Tezanos (Secretary)

Kyle Mojica (Treasurer) • Sheyla Alfau Jimenez (Director, Networking and Events)

JP Gonzalez (Historian) • Lorena Loucel (Director, SHPE Jr)

SHPE Executive Advisors

Tom Bradley, Vice President, Finance and Program Management

Alex Eksir, Vice President, Quality & Mission Success