

The Flying SHPE

The Society of Hispanic Professional Engineers at Lockheed Martin

July 2015

Volume 6, Issue 1

2015 / 2016 SHPE Board of Directors Meet & Greet

SHPE familia! Come meet the new 2015-2016 SHPE Board of Directors at Rodeo Goat Ice House, on Thursday, July 30th. Looking to get involved? Great! - We are looking for members to lead and join committees for our various community outreach and professional development programs – join us!

RODEO GOAT ICE HOUSE

What: SHPE BoD Meet & Greet

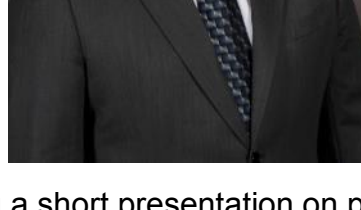
When: Thursday, July 30th, 6:00 PM

Where: 2836 Bledsoe & Currie, Ft. Worth, Texas 76107

POC: Aaron Prokopchuk (aaron.prokopchuk@lmco.com)

SHPE Lunch And Learn With Ron Bessire

The chapter is excited to introduce the next speaker for our series of career/professional development Lunch N' Learn Executive Talks - The Vice President of Engineering and Technical Operations, Mr. Ron Bessire.



Mr. Bessire will be giving a short presentation on professional development, discuss his new role as the VP of Engineering and Technical Operations, and conclude with a Q&A session with the audience.

The event will take place on **Tuesday, July 21st** from **12:00 pm – 1:00 pm** in the Theater conference room of the Aeronautics Vision Center (AVC).

Lunch will be provided. Please RSVP via email with Astrid Barajas by COB July 20th. For more event information or to nominate a future speaker, please contact [Astrid Barajas](mailto:Astrid.Barajas).

What: SHPE Lunch And Learn With Ron Bessire

When: Tuesday, July 21st from 12:00 PM – 1:00 PM

Where: Theater Room (AVC)

POC: Astrid Barajas (astrid.barajas@lmco.com)

Time Management Workshop

Michael Gutierrez, F35 Software Engineer Manager and SHPE/STEM advocate, will be providing a Time Management Workshop. He will discuss the importance of understanding where all your time is going and why. You will learn how to eliminate interruptions and delegate low-priority tasks to others. Best of all, you will learn how to recognize and protect your high-value tasks and make sure they are done well and on time.

Please note there will be no charge number provided for this workshop. This will be done on your own time.

What: Time Management Workshop

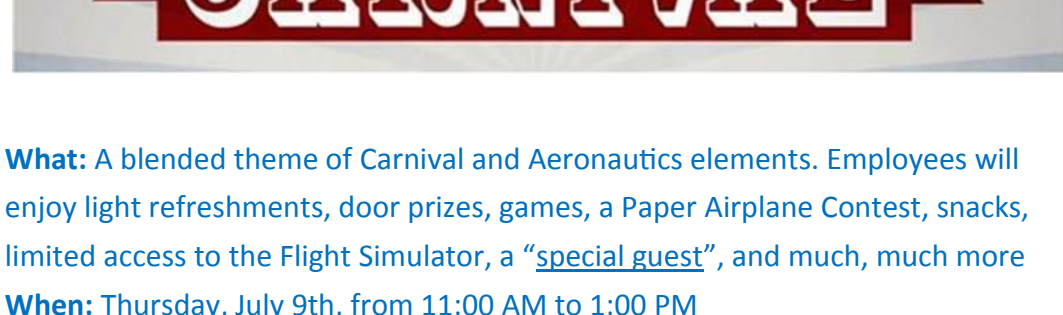
When: Wednesday, July 8th, 2015 from 3:00 PM to 4:00 PM

Where: 922/6/C2

POC: Michael Gutierrez (michael.e.gutierrez@lmco.com)

Aviation Celebration Carnival

Please stop by our booth and demonstrate your tic-tac-toe skills against SHPE and learn about our upcoming events!



What: A blended theme of Carnival and Aeronautics elements. Employees will enjoy light refreshments, door prizes, games, a Paper Airplane Contest, snacks, limited access to the Flight Simulator, a "special guest", and much, much more

When: Thursday, July 9th, from 11:00 AM to 1:00 PM

Where: The Aeronautics Visitor Center (AVC) – Fort Worth

POC: Hosted by the Diversity Council in Fort Worth, Employee Resource Groups (ERGs), Professional Societies, Functions

End of Year Awards Banquet

On Thursday, June 25th, the chapter held its annual End of Year Awards Banquet in the Engineering Conference Center (ECC). The following big events occurred during the luncheon:

The 2015 SHPE at LM Aero Scholarship Award recipients were announced and presented their certificates.

The 2014-2015 SHPE at LM Aero Chapter Award recipients were announced and presented their plaques.

The recently elected 2015-2016 Executive Board of Directors (BOD) was announced and introduced to the audience.

The following students received a 2014-2015 SHPE at LM Aero scholarship:

Antonio Araujo
Matthew Prost
Javier Salazar

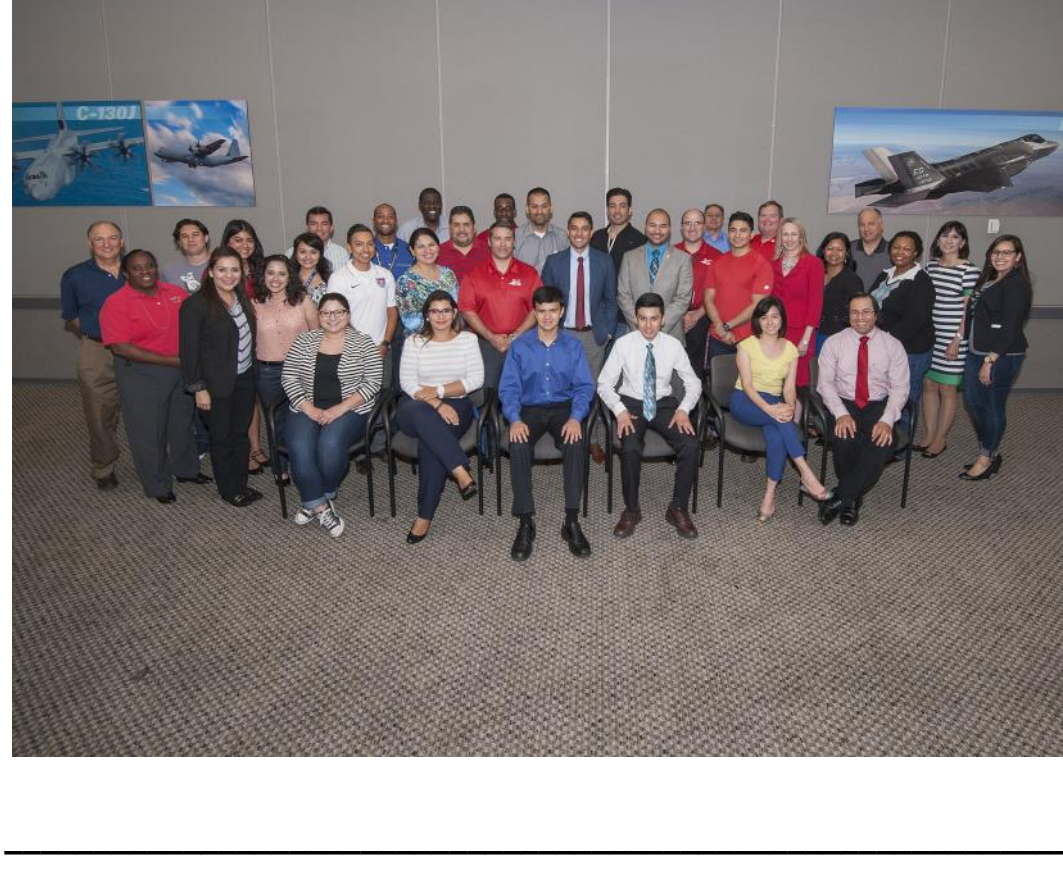
Your incoming 2014-2015 Executive Board of Directors are:

Aaron Prokopchuk - President
Astrid Barajas - Vice President, Professional Development
Lorena Loucel - Vice President, Community Outreach
Lydia Garcia - Secretary
Armando Contreras - Treasurer
Juan Pablo Gonzalez - Historian
Hugo Martinez - Director of Communications
Sergio Rodriguez - Director of SHPE Jr. Northside
James Narey - Director of SHPE Jr. Trinity
Sheyla Alfaujimenez - Director of SHPE Jr. Trimble
Matthew Castro - Director of Membership
Samantha Dominguez - Director of Community Events
Kyle Mojica - Golf Tournament Chair
Lisa Munoz - Webmaster
Joksan Holguin - Lego Lab Lead
Gabe Beard - Advisor to President

The following members were recognized for their outstanding contributions to the chapter for the 2014-2015 membership year:

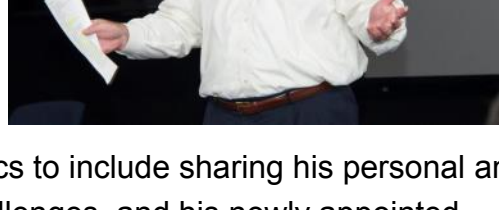
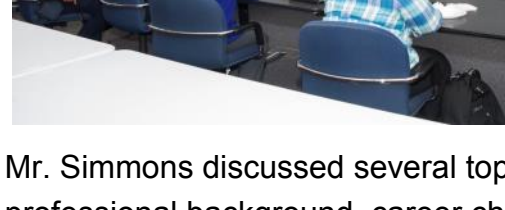
Lisa Munoz - President's Award
Lorena Loucel - Honorary SHPE Captain
Sheyla Alfaujimenez - Member of the Year

If you see any one of these folks be sure to congratulate them for a job well done! Here's to a wonderful 2014-2015! Special thanks to Amy Gowder, Vice President of Supply Chain Management, for speaking at our event and to our executive advisor, Alex Eksir for sponsoring our banquet.



SHPE Lunch and Learn With Tom Simmons

On Wednesday, June 10th the chapter continued its series of LM Executive Spotlight Talks with Tom Simmons, Vice President and General Manager of Operations for LM Aero.



Mr. Simmons discussed several topics to include sharing his personal and professional background, career challenges, and his newly appointed position leading all Operations for the Aeronautics business unit. He also presented career development advice as well as sharing his top career experience with LM. The chapter would like to thank Mr. Simmons for taking the time to speak with us and turning the event into a very interactive venue with the audience.

If you have any suggestions on future professional development events for the chapter, or to recommend a future lunch and learn speaker, please contact [Astrid Barajas](mailto:Astrid.Barajas).

SHPE Newsletter Inputs

If you have any input or events that you would like to see in our newsletter contact our director of communications [Hugo Martinez](mailto:Hugo.Martinez).

SHPE at LM Aero • www.shpefortworth.org

Like us on [Facebook!](https://www.facebook.com/shpefortworth), post photos to #shpelmaerofw

SHPE Board of Directors

Aaron Prokopchuk (President) • Astrid Barajas (VP, Professional Development)
Lorena Loucel (VP, Community Outreach) • Matthew Castro (Director of Membership)
Hugo Martinez (Director of Communications) • Lydia Garcia (Secretary)
Armando Contreras (Treasurer) • Juan Pablo Gonzalez (Historian)

• Sergio Rodriguez (Director, SHPE Jr. Northside)

James Narey (Director, SHPE Jr. Trinity) • Sheyla Alfau Jimenez (Director, SHPE Jr. Trimble)
Samantha Dominguez (Director, Community Events) • Kyle Mojica (Golf Tournament Chair)
Lisa Munoz (Webmaster) • Joksan Holguin (Lego Lab Lead)
Gabe Beard (Advisor to the President)

SHPE Executive Advisors

Tom Bradley, Vice President, Finance and Program Management

Alex Eksir, Vice President, Quality & Mission Success