

The Flying SHPE

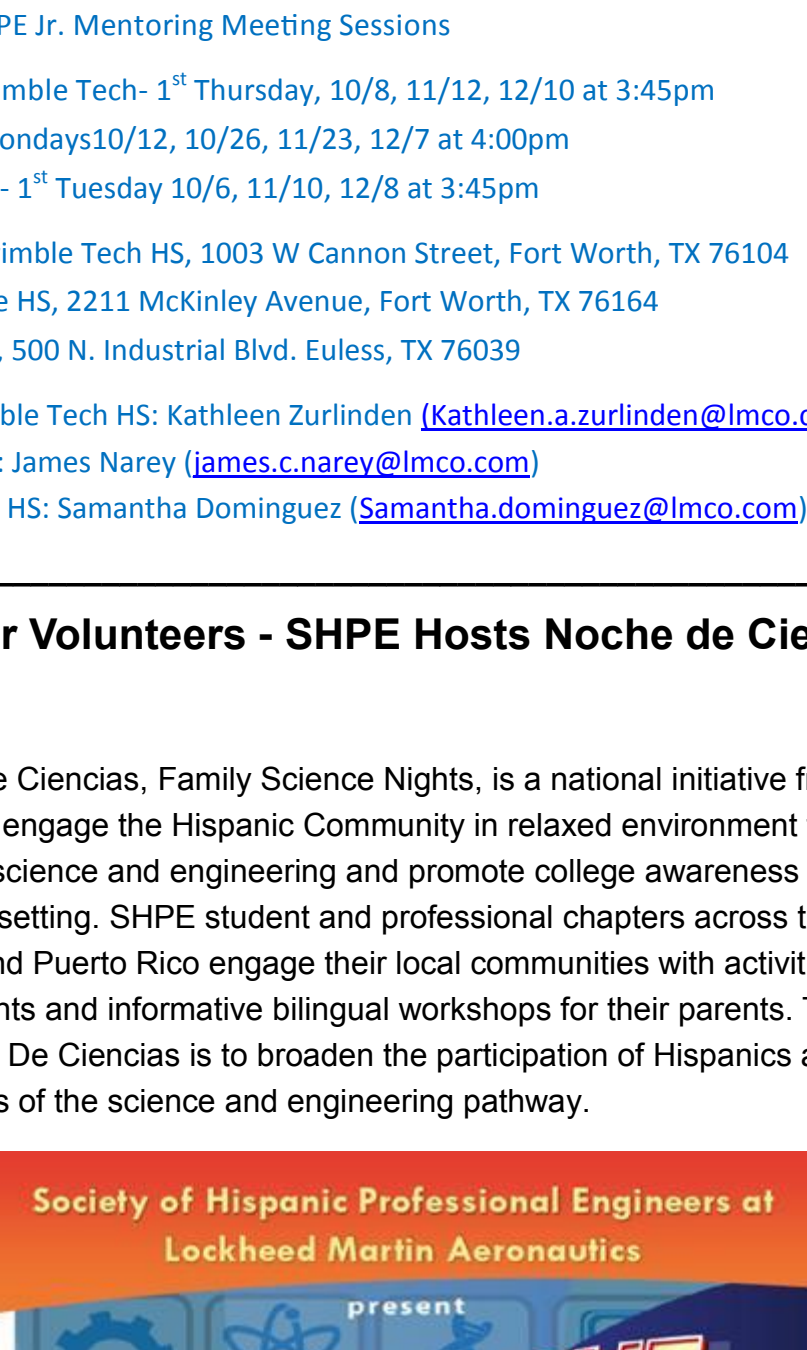
The Society of Hispanic Professional Engineers at Lockheed Martin

October 2015

Volume 6, Issue 4

Community Outreach: SHPE Jr. Volunteering

As the academic year gets underway, SHPE LM Aero is seeking volunteers to assist with STEM activities or professional speakers at Trimble Tech, Trinity, and Northside on the scheduled mentoring meeting dates. The activity materials and speaking topics will be provided. All that is required is to go to the school and be willing to interact and engage with the students. Please contact the SHPE Jr. Lead for more information and how to sign-up!



What: SHPE Jr. Mentoring Meeting Sessions

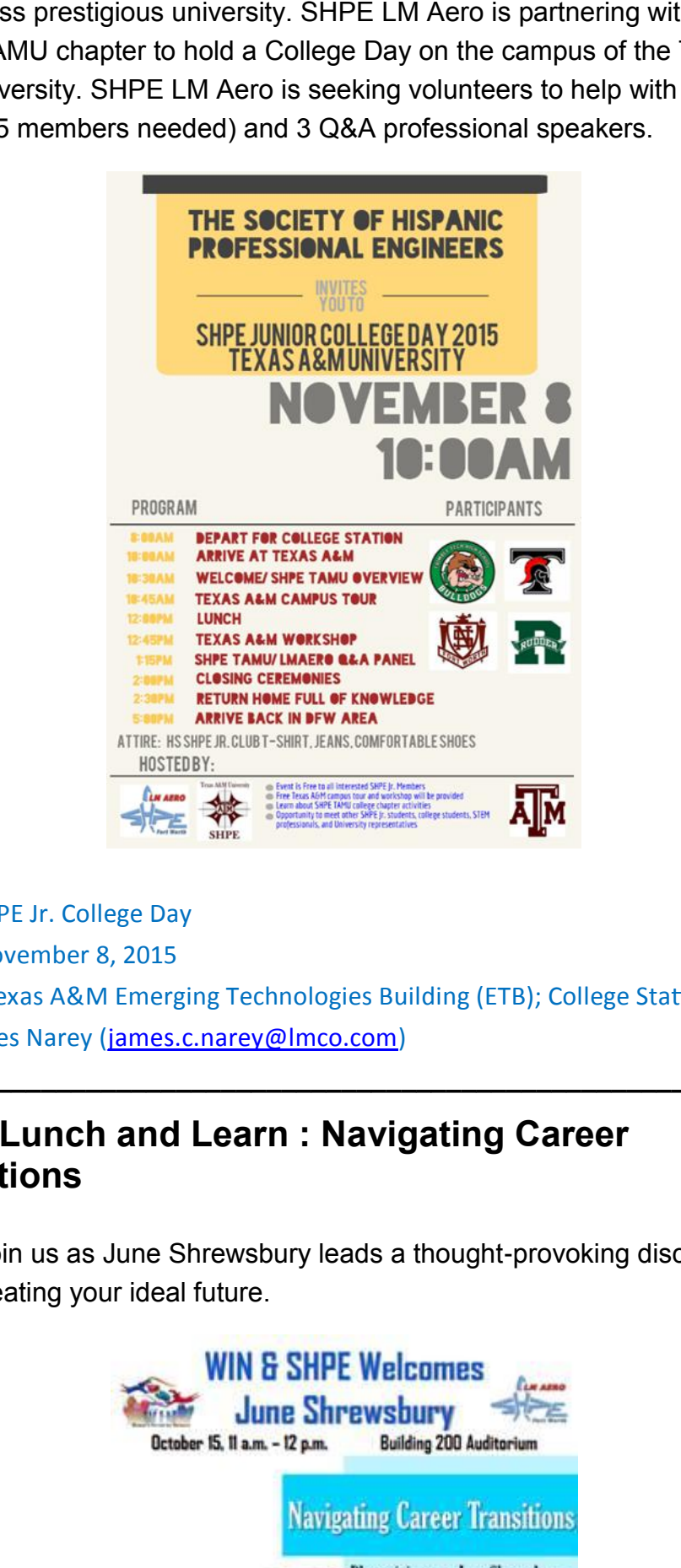
When: Trimble Tech- 1st Thursday, 10/8, 11/12, 12/10 at 3:45pm
Trinity- Mondays 10/12, 10/26, 11/23, 12/7 at 4:00pm
Northside- 1st Tuesday 10/6, 11/10, 12/8 at 3:45pm

Where: Trimble Tech HS, 1003 W Cannon Street, Fort Worth, TX 76104
North Side HS, 2211 McKinley Avenue, Fort Worth, TX 76164
Trinity HS, 500 N. Industrial Blvd. Euless, TX 76039

POC: Trimble Tech HS: Kathleen Zurlinden (Kathleen.a.zurlinden@lmco.com)
Trinity HS: James Narey (james.c.narey@lmco.com)
Northside HS: Samantha Dominguez (Samantha.dominguez@lmco.com)

Call for Volunteers - SHPE Hosts Noche de Ciencias 2015

Noche de Ciencias, Family Science Nights, is a national initiative from SHPE to engage the Hispanic Community in relaxed environment to have fun with science and engineering and promote college awareness in a bilingual setting. SHPE student and professional chapters across the United States and Puerto Rico engage their local communities with activities for K-12 students and informative bilingual workshops for their parents. The goal of Noche De Ciencias is to broaden the participation of Hispanics along all segments of the science and engineering pathway.



What: Noche De Ciencias

When: Thursday, October 15

Where: 1003 W Cannon St, Fort Worth, 76104

POC: Lorena Loucel (Lorena.L.Loucel@lmco.com)

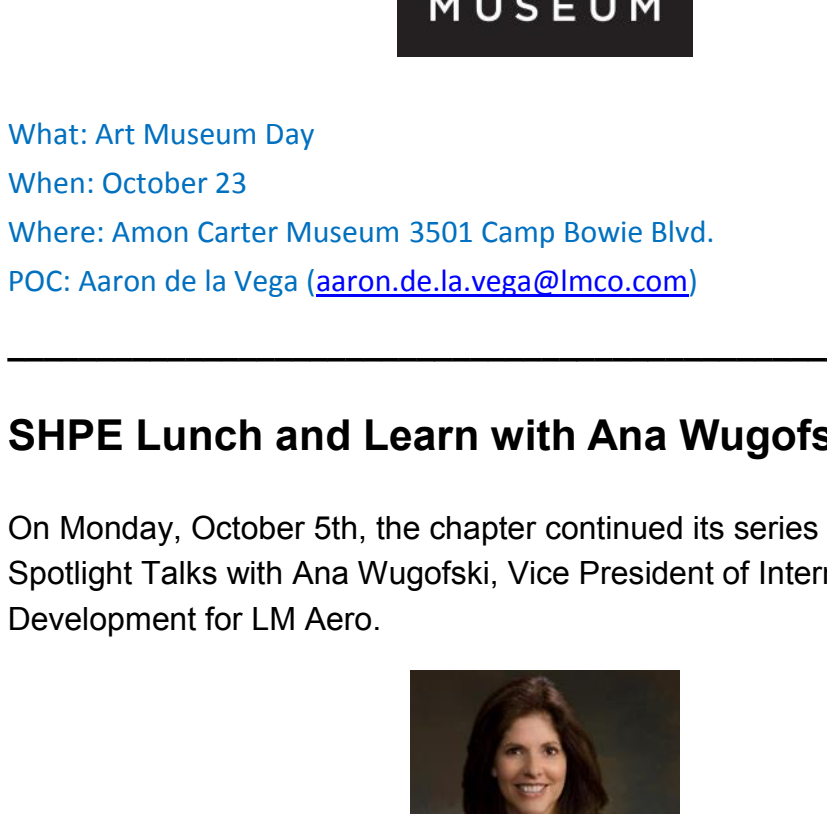
SHPE Polos

We are currently taking orders for SHPE Nike Dri-Fit polos. This year there will be two color options as seen below. If you are interested in purchasing one or both polos, please click [here](#), or visit the SHPE SharePoint site and take the "2015-2016 SHPE Polos" survey to order by October 16th.

Sizes and Pricing (Female and Male Sizes)

\$33.95 S-XL

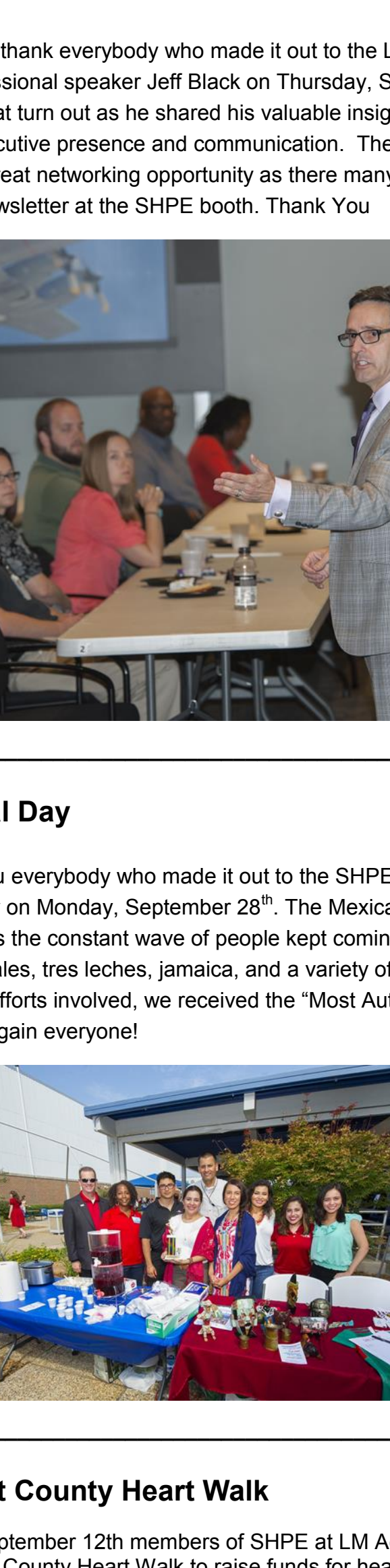
\$35.95 XXL



POC: Matthew Castro (matthew.a.castro@lmco.com)

Community Outreach: SHPE Jr. College Day

Our SHPE Jr. students have asked to go on a college tour and learn about college of engineering opportunities, campus tour, and life as a college student, and learn about next steps at the SHPE college chapter level at a world-class prestigious university. SHPE LM Aero is partnering with the SHPE TAMU chapter to hold a College Day on the campus of the Texas A&M University. SHPE LM Aero is seeking volunteers to help with campus escorts (5 members needed) and 3 Q&A professional speakers.



What: SHPE Jr. College Day

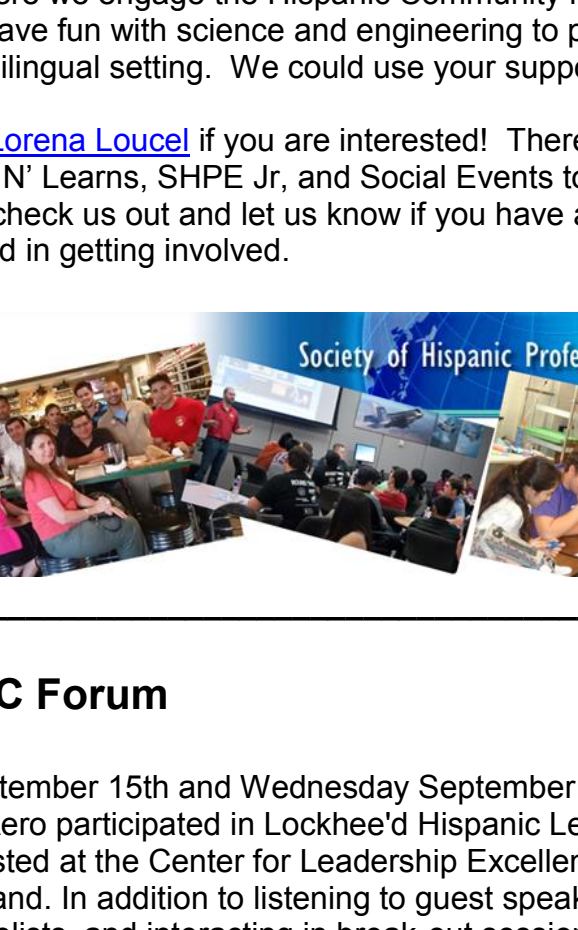
When: November 8, 2015

Where: Texas A&M Emerging Technologies Building (ETB); College Station, TX

POC: James Narey (james.c.narey@lmco.com)

SHPE Lunch and Learn : Navigating Career Transitions

Please join us as June Shrewsbury leads a thought-provoking discussion about creating your ideal future.



What: Women's Initiative Network (WIN) and SHPE have partnered to bring you June Shrewsbury to speak about Navigating Career Transitions.

When: Thursday, October 15, 2015 11 am -12 pm

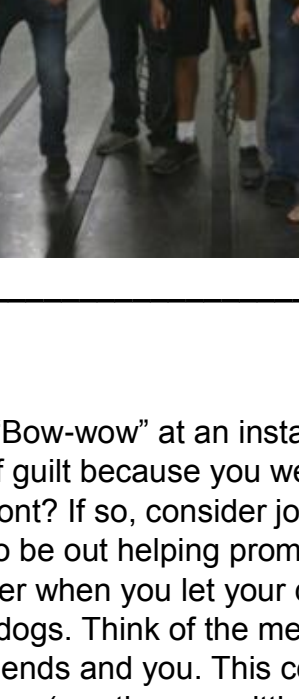
Where: Building 200 Auditorium

POC: Contact [Astrid Barajas](#) or [Lorena Loucel](#) for RSVP or additional event information

Art Museum Day

Ready to get classy? Come to the Amon Carter Art Museum on October 23rd! The museum encourages all people to develop and increase their understanding and appreciation for modern and contemporary artwork via a variety of exhibitions in its gallery spaces. Time and price TBA, stay tuned!

If you have any suggestions on future social events please contact [Aaron de la Vega](#) (aaron.de.la.vega@lmco.com)



What: Art Museum Day

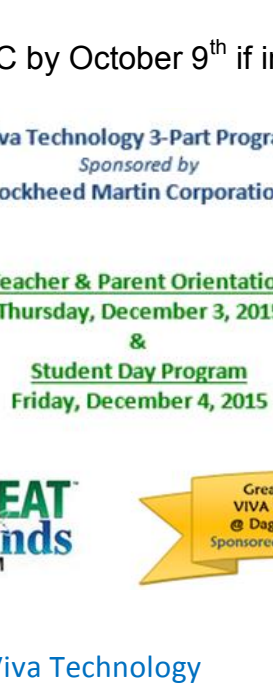
When: October 23

Where: Amon Carter Museum 3501 Camp Bowie Blvd.

POC: Aaron de la Vega (aaron.de.la.vega@lmco.com)

SHPE Lunch and Learn with Ana Wugofski

On Monday, October 5th, the chapter continued its series of LM Executive Spotlight Talks with Ana Wugofski, Vice President of International Business Development for LM Aero.



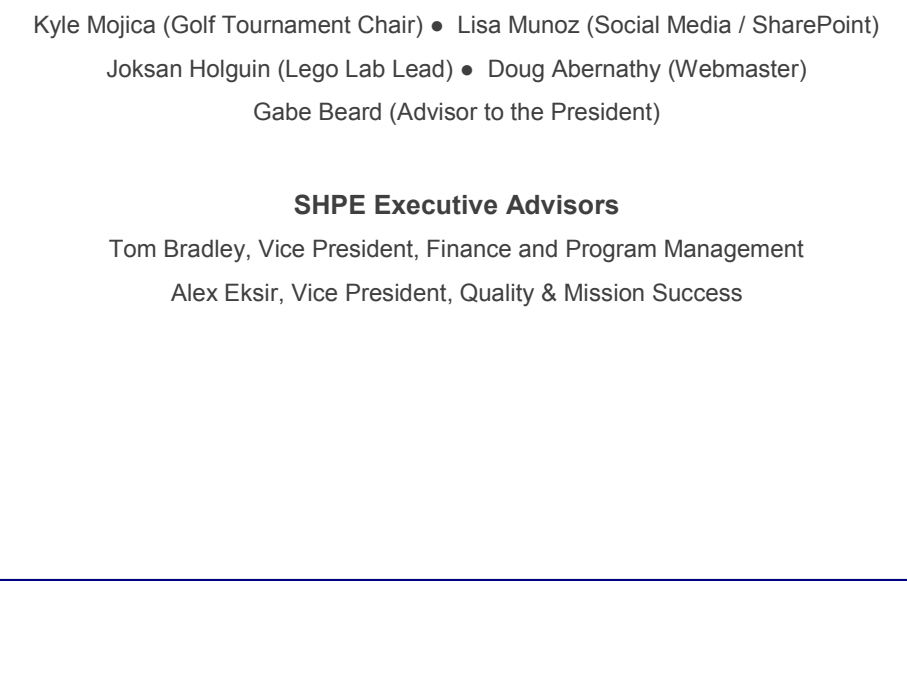
Ana shared her personal background and professional experiences to outline her journey which was also transmitted via VTC to our sister chapter in Marietta . Her personal and professional progressions helped in transforming Ana into the world class leader she has become. She was able to show how overcoming challenges, taking risks and employing a strong work ethic propelled her and her teams into success. Ana continues her support for the STEM and Hispanic community and is a great example of the kind of leader many of our SHPE members aspire to be.

SHPE would like to thank Ana for her presence, interest and contribution to the professional development of the chapter and her ongoing support of its members.

If you have any suggestions on future professional development events or speakers please contact [Astrid Barajas](#).

LMLA Meet & Greet

We would like to thank everybody who made it out to the LMLA Meet & Greet with professional speaker Jeff Black on Thursday, September 24th. There was a great turnout as he shared his valuable insight on useful strategies in executive presence and communication. The event also proved to be a great networking opportunity as there many who signed up for our SHPE newsletter at the SHPE booth. Thank You



International Day

A huge thank you everybody who made it out to the SHPE booth for International Day on Monday, September 28th. The Mexican themed table was a huge hit as the constant wave of people kept coming to enjoy our mole, tinga, nopales, tres leches, jamaica, and a variety of Mexican treats. Because of the efforts involved, we received the "Most Authentic Food" award. Thanks again everyone!

2015 Tarrant County Heart Walk

On Saturday, September 12th members of SHPE at LM Aero participated in the 2015 Tarrant County Heart Walk to raise funds for heart disease and stroke research and education. We were joined by many walkers from Lockheed Martin and enjoyed the beautiful morning stroll together.

Thank you to all those that participated and donated to this great cause. It is also not too late to contribute and help us meet our donation goal. Please click [HERE](#) if you wish to contribute, thanks.

SHPE General Meeting

On Thursday, October 1st, the chapter held its first General Body Meeting. We introduced the new Board as well as refreshed new members of what SHPE is all about. There are many upcoming Community Service Opportunities for you to get involved in, most notably Noche De Ciencias on October 15th, where we engage the Hispanic Community in a relaxed environment to have fun with science and engineering to promote college awareness in a bilingual setting. We could use your support in this effort.

Please contact [Lorena Loucel](#) if you are interested! There are also upcoming Lunch N' Learns, SHPE Jr, and Social Events to keep an eye out. So please, check us out and let us know if you have any questions and are interested in getting involved.

SHPE at HLC Forum

On Tuesday September 15th and Wednesday September 16th, members of SHPE at LM Aero participated in Lockheed's Hispanic Leadership Council (HLC) Forum hosted at the Center for Leadership Excellence (CLE) in Bethesda, Maryland. In addition to listening to guest speakers, asking questions to panelists, and interacting in break-out sessions, participants experienced networking with more than 200 employees in attendance, as well as Marilyn Hewson and many of her Executive Leadership Team members.

Participants were also able to meet and talk with the University of Texas at El Paso's (UTEP) President, Dr. Diana Natalicio, and Aeronautics Executive Vice President, Orlando Carvalho. The chapter hopes to build on the relationships it established at the conference and continue building synergy with other Hispanic organizations, as well as supporting Mr. Carvalho's initiative of reaching 18,000 Hispanics in the corporation by 2018. See below for additional information and media from HLC.

Video messages, presentations, HOLA's Professional Development Webcasts series, and downloadable photos can be found on the [Leadership Corner](#) page on the HLC's website.

The HLC is always interested in hearing from you! Please [email us](#) your good news stories, upcoming events, awards or achievements, etc. so we can feature these items on our website and share on the [HLC's Eureka](#).

Whirly Ball

Whirlyball was a blast! Those who didn't attend really missed out! While we only had 6 people show up we had two teams of 3v3. At first the environment didn't look like it was going to be fun as the court showed signs of age. As soon as we got in our cars and started moving around that's when it became addicting! It took some time to get adjusted to using the lacrosse gear and for the last game we used 2 balls which turned into a frenzy! Stay tuned for our next event this month!

Dog Social Flyer

Do you translate "Ruff" or "Bow-wow" at an instant of your dogs bark? Do their eyes waiver on you of guilt because you were out all day and they were home guarding the front? If so, consider joining a new social group for the both of you. It's great to be out helping promote STEM to the talent of tomorrow but it's even better when you let your dog socialize with fellow SHPE members and their dogs. Think of the memories and smiles your dog (s) will have of their new friends and you. This concept is in the early stages but the idea is to get together (weather permitting) bi-monthly on a Saturday/Sunday with other dog owners at a local dog park (TBD) and then have lunch at a dog friendly location.

If you would like to participate e-mail [Juan P. Gonzalez](mailto:Juan.P.Gonzalez).

Call for Volunteers – Viva Technology 3-Part Program

We are looking for volunteers to help host the Viva Technology events sponsored by Lockheed Martin Aeronautics. **Viva Technology™** is a national K-12 education program designed to engage students, teachers and parents with STEM challenges that stimulate interest in the application of technology and provide STEM-focused career pathways. The program creates awareness, supplies STEM resources, and provide access to STEM career pathways.

Please touch base with POC by October 9th if interested in participating.

What: Great Minds in STEM Viva Technology

When: Thursday & Friday , December 3 & 4, 2015

Where: Daggett Middle School 1108 Carlock Street, Fort Worth, TX 76110

POC: Bonnie Crow (Bonnie.Crow@lmco.com)

Call for Volunteers - Career Day at Westcliff Elementary

Westcliff Elementary have requested our support for their career days on Thursday November 12, 2015. Help us make an impact in your community and help develop the STEM pipeline!

What: Career Day at Westcliff Elementary (Pre-K to 5th)

When: Thursday, November 12

Where: 4300 Clay Avenue, Fort Worth, 76109

POC: Brooks, Lester M (lester.m.brooks@lmco.com)

Call for Volunteers - Career Day at Diamond Hill Elementary

Diamond Hill Elementary has requested our support for their career days on Friday October 15, 2015. Help us make an impact in your community and help develop the STEM pipeline!

What: Career Day at Diamond Hill Elementary (Pre-K to 5th)

When: Friday, October 30, 2015

Where: 2000 Dewey St, Fort Worth, TX 76106

POC: Michael Zamarron (michael.zamarron@lmco.com)

SHPE Newsletter Inputs

If you have any input or events that you would like to see in our newsletter contact our director of communications [Roberto Olono Jr.](#)

SHPE at LM Aero • www.shpefortworth.org

Like us on [Facebook!](#), post photos to #shpelmaerofw

SHPE Board of Directors

- Aaron Prokopchuk (President) • Astrid Barajas (VP, Professional Development)
- Lorena Loucel (VP, Community Outreach) • Matthew Castro (Director of Membership)
- Roberto Olono Jr. (Director of Communications) • Lydia Garcia (Secretary)
- Amando Conteras (Treasurer) • Juan Pablo Gonzalez (Historian)
- Aaron De La Vega (Director, Social Events) • Samantha Dominguez (Director, SHPE Jr. Northside)
- James Narey (Director, SHPE Jr. Trinity) • Kathleen Zurlinden (Director, SHPE Jr. Trimble)
- Kyle Mojica (Golf Tournament Chair) • Lisa Munoz (Social Media / SharePoint)
- Joksan Holguin (Lego Lab Lead) • Doug Abernathy (Webmaster)
- Gabe Beard (Advisor to the President)

SHPE Executive Advisors

- Tom Bradley, Vice President, Finance and Program Management
- Alex Eksir, Vice President, Quality & Mission Success